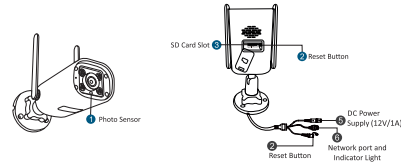


Smart 3MP Wi-Fi Outdoor Camera

Product Information Notice :

This guide pertains to Smart 3MP Wi-Fi Outdoor Camera and may differ from the actual product. Refer to the specific product for accurate information. Updates to this manual may occur without prior notice due to product upgrades or other needs.

3MP Wi-Fi Outdoor Camera :



Description :

- 1. Photo Sensor** Collects ambient luminosity value and turns ON Infrared light when the current illumination is less than 3 Lux
- 2. Reset Button** Long Pressing this button would reset the device to factory settings. The device would produce a sound prompt for the factory reset.
- 3. SD Card Slot** To insert SD Card for storing video and playback video.
- 4. DC Power Supply** Power Input (12V/A)
- 5. Network Port & Indicator Light** While configuring to Wi-Fi/ Wired Network (connecting the internet cable), the indicator light flashes once every 3s, after successful network configuration the indicator light stays ON.

Quick User Guide

4. The configuration would take less than a minute to finish.

5. After the configuration is successful set a name for the camera and click Confirm.

2. After Clicking 'Add camera', all the available devices would be displayed as a list

3. Select Input Manual For local configuration.

6. Press the reset button on the device twice and then click on "I Have Double Clicked"

7. Go to Wi-Fi settings of mobile find camera AP (i.e. Access point) name

Note : If you do not see the pop-up box, please scan the device body according to the QR code on the APP, complete device configuration and addition according to the guidance of the APP

Warning



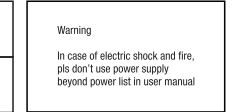
In case of fire or lightning, pls don't put product in damp and raining place. Operate or maintain only according to the user manual.



Be careful when you see an attachment with the Dangerous Voltage Sign which might cause serious electric accident.



To reduce electric shock, unprofessional people please don't open product front panel or rear panel



In case of electric shock and fire, pls don't use power supply beyond power list in user manual

Notice:

- Ensure your equity, please read the user manual carefully before you use the product
- Please contact professional people if you need install and maintain the product
- Working Environment : temperature of -20°C~+60°C, relative humidity under 85%
- Please do not exceed the standard range of temperature, humidity and voltage as suggested in the user manual.

Note : Before adding the camera, please make sure that the bluetooth function of the mobile phone is turned on. During the adding process if a prompt box pops up to enable bluetooth or bluetooth authorization, please follow the steps in the prompt box to enable it.

Software Installation

- **APP Download and Installation** Users can search for "Alliance Suraksha" on App store or Google play. You can also Install the App by scanning the QR code



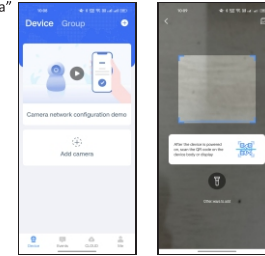
Android APP



iPhone

Configuring in Wi-Fi Mode : Wi-Fi Distribution Network

1. Log in to the "Alliance Suraksha" click the "+" Button on the interface (Figure 1) and enter the scanning interface in (Figure 2).

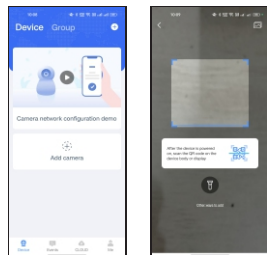


Note : The App requires iOS version 9.0 or Android 5.0 or above

Direct Connection (Without Internet) :

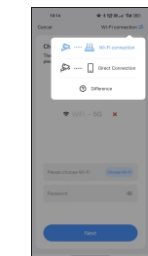
In case there is no Wi-Fi network near the location where the camera is to be installed, click the "Wi-Fi distribution network" button in the upper right corner of the Wi-Fi selection interface. Click to switch to "Direct Connection" in the pop-up window.

1. Open the APP, click the "4" icon in the middle of the interface to enter the scan code interface (Make sure the mobile Bluetooth is enabled)



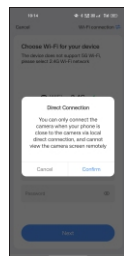
④

4. At the Wi-Fi selection interface click the "Direct Connection"



⑤

5. Click on Confirm



⑥

Note : The direct connection needs to be connected to the Camera's AP mode to preview the camera screen normally. In this mode the camera cannot be viewed remotely.